



2/2-way Solenoid Valve Servo Operated for High Pressure

- Push-over solenoid system
- special versions, up to 250 bar, up to DN 12
- stainless steel body

The servo-assisted Type 2400 valve has a servo-piston with a 2-way servo-control. It is designed for high pressures.

The speciality of this valve design lies in the layout of the seat and sealing element. An additional radial seal make very good sealing possible.

The tapered sealing element of the servocontrol permits the switching of high pressure at relatively low coil power.

Technical data	
Body material	stainless steel, brass and brass, nickel-plated
Valve internals	stainless steel
Sealing material	PEEK/FKM; PCTFE/FKM; PTFE/FKM
Media	neutral gases and fluids
Medium temperature	
PEEK/FKM	-10 to +80 °C
PCTFE/FKM	-10 to +80 °C
PTFE/FKM	-10 to +80 °C
Ambient temperature	max. +55 °C
Viscosity	ca. 21 mm/s
Operating voltage	24/DC 24/220-230 V / 50 Hz other voltages on request
Voltage tolerance	±10%
Cycling rate	ca. 80/min
Duty cycle	100 % continuous rating
Electrical connection	Cable plug (part of the delivery)
Protection class	IP65 with cable plug
Installation	as required, preferably with actuator upright

Technical data

Orifice [mm]	Kv-value water [m/h]	Port connection	Pressure range		Electrical power consumption			Response times		Weight [kg]
			AC [bar]	DC [bar]		Inrush	Hold	Opening [ms]	Closing [ms]	
5.0	0.6	G 1/4	1-250	1-200	AC	85 VA	48 VA/20 W	100	300	1.2
8.0	1.0	G 3/8	1-250	1-210				bis	bis	1.4
12.0	2.6	G 1/2	1-250	1-160	DC	20 W	20 W	200	500	1.95

Kv value [mm/h]: Flow rate value for water, measured at +20 °C and 1 bar pressure differential over a fully opened valve.

Pressure data [bar]: Overpressure with respect to atmospheric pressure

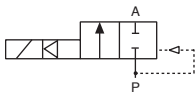
Response times [ms]: measured at valve outlet at 6 bar and +20 °C

Opening: pressure build-up 0...90%

Closing: pressure relief 100...10%

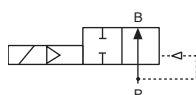
Circuit functions of the valve

Circuit function A



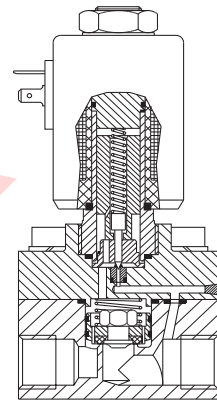
2/2-way valve,
servo-assisted,
normally closed,
with servo-piston

Circuit function B

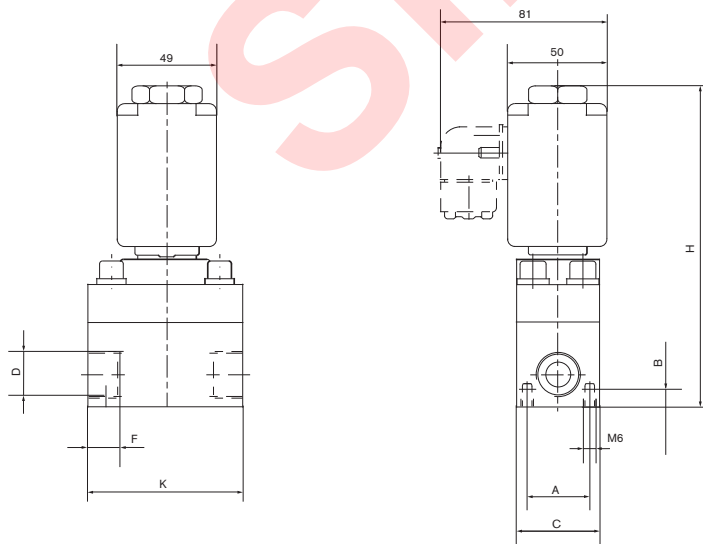


2/2-way valve,
servo-assisted,
normally open,
with servo-piston

Schematic diagram



Dimensions [mm]



DN	D	A	B	C	F	H	K
5,0	G 1/4	30	12	∅ 50	8	126	∅ 50
8,0	G 3/8	29	8	∅ 40	8	126	∅ 65
12,0	G 1/2	29	8	∅ 40	14	153	∅ 75

Ordering chart for valves (other versions on request)

Circuit function	Orifice [mm]	Port connection	Kv-value water [m/h]	Pressure range [bar]	Body material	Seal material	Voltage/frequency [V/Hz]	Item no.
A	5.0	G 1/4	0.6	1-200	Brass	PEEK/FKM	24/DC	002 366
				1-250	Brass	PEEK/FKM	220-230/50	002 367
	8.0	G 3/8	1.0	1-210	Brass	PEEK/FKM	24/DC	002 369
				1-250	Brass	PEEK/FKM	24/50	132 436
							230/50	002 370
	12.0	G 1/2	2.6	1-250	Stainless steel	PCTFE/FKM	24/DC	000 520
							24/50	134 690
							220-230/50	000 422
				1-160	Brass. nickel-plated	PTFE/FKM	24/DC	006 725
							24/50	000 284
						220-230/50	000 455	

- Circuit function B (normally open) and EEx ed IIC T4 model on request
- For spare part kit, please refer to Spare Part Catalogue.

SIDEX

To find your nearest Bürkert facility, click on the orange box → www.buerkert.com

If case of special conditions,
please consult for advice.

Subject to alteration.
© Christian Bürkert GmbH & Co. KG

1510/03_EU-en_00891942